

For more details here is a full list of the specs for the device:

Acer Aspire one D255E

Acer Aspire One D255E Specifications

Model	3-cell battery, up to 4 hours
Operating System	Windows 7 Starter
Processor	Intel Atom Single Core N455 (1.66GHz, 512KB L2 cache)
Chipset	Mobile Intel NM10 Express
Memory	1GB DDR3
Storage	250GB HDD (5400 rpm)
Display	10.1 inch WSVGA CrystalBrite LED-backlit (glossy screen)
Display Resolution	1024 x 600
Graphics	Intel Graphics Media Accelerator 3150 (integrated graphics)
Audio	Stereo Speakers
Integrated digital microphone	
Microsoft DirectSound compatibility	
Webcam	1.3 megapixel
Ethernet LAN	10/100 Fast Ethernet (RJ45 Port)
Wireless LAN	Wireless-N Wi-Fi (802.11b/g/n)
Memory Card Reader	MultiMedia Card (MMC) Secure Digital (SD)
Ports	VGA for connecting to an external monitor 3 USB 2.0 ports RJ45 LAN port
Microphone input port	
Headphone output port	
Keyboard and Touchpad	84-keys, 93% full-size keyboard and Multi-gesture touchpad
Security	Kensington lock slot
User, administrator and hard drive BIOS passwords	
Dimensions (W x D x H)	10.17" x 7.28" x 0.95"
Weight	2.43 lbs (1.1 kg)
Power/Battery	40W AC Adapter, 3-cell Lithium-Ion Battery (2200 mAh), up to 4 hours

The device can be purchased for around \$250 in many stores. I decided to try to buy one from eBay and save some money. I purchased one from a Canadian company called Surplus By Design for a cost of \$170, including shipping. It took a couple of weeks to get here. I was really upset with the company. They shipped me a laptop with a French only version of Windows 7 Starter installed – one that would not even take English Language packs. All of the correspondence was in English and there was no indication anywhere in the lists or correspondence indicating it would be in French. This was bullshit French culture games being played by the company instead of dealing fairly with the customer. After a rather unpleasant email from me they offered to replace the computer with one in English, allow me to return it, or they would give me an additional discount on the purchase price. The purchase was through eBay – the price was good, I won't tell you not to buy from them, just make sure they promise to ship you one with an English version of Windows 7 starter.

It upset me more because of the disingenuousness of the act than because it caused me that bad of a

problem. I got another copy of Windows 7 Starter and reinstalled it over the existing installation. The activation code for the French version included was valid, so I just needed to use that code to activate the English version of the software. If you get a copy with an English version of the software, you will not need to do this, but then again you might want to just to get a clean system to start.

During the reinstallation of Windows 7 process I lost the preinstalled software that was on the machine, but for most of it, it was not a loss. These machines and any new computer are filled up with crap demo stuff that needs to be removed anyway. The only loss really was a version of Word 2010 and Excel 2010. I had planned on installing my Microsoft Office 2007 Home and Student suite that included the 2007 version of Word, Excel, and Powerpoint. I wanted the same versions on both of my computers.

There are drivers for most of the hardware built into Windows 7, so the computer will start and boot fine without any additional preparation on your part. The network and wireless drivers are not among those included in Windows 7. To install these, go to Control Panel - Device Manager and look for the three items with the yellow exclamation points.

Click on one of them - click on the driver tab – choose update driver then chose to browse for driver location on the next screen. The drivers for these three devices are in windows.old/system32. Browse to this directory and then let the computer search for the correct driver among those present. Do this for each device. After these are installed you can connect to a wireless network if one is available.

There are some additional drivers or newer drivers available from the Acer website here:

<http://us.acer.com/ac/en/US/content/support> but some only apply if you have a wireless 3G card, etc. Work through the menu to select your particular model. I downloaded and installed the Intel Chipset driver, the Intel SATA AHCI Driver, and Realtek Audio Driver, and I also downloaded the Acer ePower Management Application. Others can be downloaded as needed.

The original preloaded software had a 30 day trial of McAfee Antivirus on the system. I lost this, but there are many good free antivirus programs available.

Look for legitimate downloads from Cnet from here: <http://download.cnet.com/windows/> If the program is not available from this site, I would be skeptical that it is a legitimate program and would be afraid it was malware or a virus. I chose to install Microsoft Security Essentials [http://www.microsoft.com/en-us/security ... fault.aspx](http://www.microsoft.com/en-us/security...fault.aspx) from the anti-virus options although there are several other good and popular anti-virus programs available at Cnet. Installing this security program was the first thing I did after the driver installations. Don't browse the web until you have protection. At this point, no matter where you got the computer, and whether or not you opted to reinstall the operating system, you really should spend the next few hours getting windows updates, and updates for Microsoft Security Essentials to make sure your computer is protected.

The next step was to add what other software was needed as a base starting point for intended use. The laptop has a built in webcam and microphone. I wanted to be able to use this device, perhaps to record some quick notes in the field, or to video chat.

Whatever – it is on the computer, so I want it to work. The best option for free that I found was Debut Video Capture Software 1.63 It is produced by NCH Software. If you go to their site, or to CNet, the only option I could find was a full professional version of the software that has a price of If you download it, you can install this program, but during the installation be sure to watch for check boxes or it will install a toolbar and change your default home page. In addition this full version it will add links and download starters for other NCH programs to your menu list. It is a trial version that will only work for a short period of time unless you purchase the software or downgrade it to the free version.

After installing this professional version, if you go to Control Panel – Programs and features you can click to uninstall the program. When you do this, you are given the option to downgrade to the free version.

You can downgrade to the free version, but some of the crap will still be left on the computer. A better option is to go to one of many sites that will let you directly download the free version of the software.

Softpedia is one source:

[http://www.softpedia.com/get/Multimedia ... ture.shtml](http://www.softpedia.com/get/Multimedia...ture.shtml) or from here: [http://www.freeweb.net/windows/debut-vi ...](http://www.freeweb.net/windows/debut-vi...)

[/26924.htm](#) Both will download the free version 1.63. These will install the free version without the need to do the downgrade process, and without the other junk being added to your menu, but you still need to watch for the check boxes during installation. Still in spite of this nonsense, it is a worthwhile program to install on the netbook.

I want to be able to write notes in the field, to run spreadsheets, and maybe hook up to a projector using a PowerPoint presentation. I opted to install a version of Microsoft Office. A free alternative to office, that writes office compatible documents and spreadsheets in Open office. It can be downloaded from here: [http://download.cnet.com/OpenOffice-org ... ag=mncol;1](http://download.cnet.com/OpenOffice-org...ag=mncol;1)

I wanted to be able to view and do some basic editing of photographs I have taken. I have many photo editing programs on my home computer. The workhorse of the bunch is Thumbs Plus by Cerious. It is a commercial program and not free, but since have a license, I installed it on the netbook. I highly recommend a program called Irfanview as a free alternative. It is available here: <http://www.irfanview.com/> It is a small easy to use program that will work fine for quick manipulations in field. A heavier duty free image editor is one called GIMP [http://download.cnet.com/GIMP/3000-2192 ... ag=mncol;1](http://download.cnet.com/GIMP/3000-2192...ag=mncol;1) It is described as “One of the most powerful general-purpose image editors around, the upgrades make the GNU Image Manipulation Program eminently comparable to Photoshop.”

You will want to play the videos you create with your webcam or camera on your netbook. Windows media player really stinks, so. There is only one program to consider VLC Media Player [http://download.cnet.com/VLC-Media-Play ... ag=mncol;1](http://download.cnet.com/VLC-Media-Play...ag=mncol;1) It plays about every type of video out there including HDC video of many of the newer camcorders.

Windows Live Essentials:

<http://explore.live.com/windows-live-essentials> This is suite of applications from Microsoft that includes a Windows Live Mail email program, Movie Maker, and Windows messenger. There is a bunch of other stuff included which are mostly useless, and some

like trying to install the Bing Bar which is really annoying. It is useful to be able to check your email when you have a wifi access point. You can set up Windows Live Mail to not download the messages from the server, so that they can still be downloaded from your home computer. Windows Maker is a basic movie editor, and Microsoft messenger is a chat client. These have some utility. Uncheck as much as possible of the rest before downloading or installing. Messenger will want you to log in. If you do so, set it to not start when Windows first starts. You don't need it to be connected all the time and it will unnecessarily drain system resources when not in use.

Adobe acrobat reader and Adobe Flash Player:
<http://www.adobe.com/> You will want to be able to view pdf documents on your laptop and view flash videos on the web. Go to the site above and download and install them.

Google Earth
<http://www.google.com/earth/download/ge/agree.html> This will let you view the world in maps, air photos, etc. You may not be able to connect when you are in the field, but you can download maps you want before you go, or from where ever you have access. When installed, it warned that the screen resolution was not high enough, but it works anyway – the resolution is 1024 x 600 rather than 1024 x 768, but it works anyway. To go with Google Earth, a good screen capture program is a must. I recommend Screen Hunter Free:
<http://download.cnet.com/ScreenHunter-F...>
[ag=mncol;9](#)

Compression Utility: As you download and share files, you will need a program to compress and uncompress various types of archives. The highest rated free program is one called 7-Zip:
<http://download.cnet.com/7-Zip/3000-225...>
[torsreview](#) It handles many compression formats: Packing / unpacking: 7z, XZ, BZIP2, GZIP, TAR, ZIP and WIM. Unpacking only: ARJ, CAB, CHM, CPIO, CramFS, DEB, DMG, FAT, HFS, ISO, LZH, LZMA, MBR, MSI, NSIS, NTFS, RAR, RPM, SquashFS, UDF, VHD, WIM, XAR and Z. That covers pretty much everything you might normally encounter.

System Utility: To keep your system running well and to correct problems try WinUtilities Free Edition:
<http://download.cnet.com/WinUtilities-F...>
[ag=mncol;1](#) It is one I run regularly on my home computer.

Malware Utility: In addition to anti-virus and general protection another maintenance program that is useful to identify and remove spam, trojans, and malware from your computer is Malware Bytes Anti-Malware: <http://download.cnet.com/Malwarebytes-A...>
[ag=mncol;3](#) It has about the highest rating from the editors at Cnet among the free spyware programs and I would recommend it.

I am sure that there will be other programs added to the system as time passes, but these are a good start. I also spent some time adjusting system settings. I wonder what brain dead team of technicians at Microsoft decided that nobody want to see the extensions for known file types? If you can't see the extension, how can you tell what type of file it might be? Likely the same ones that decided to not show the menus on the folders and Internet Explorer. After several more tweaks of this nature the setup of the system is done.

What to put on the computer?

There are dozens of older tree identification guides available for <http://www.archive.org> as pdf files. I can add dozens to the netbook to use as references. I can download photos, trip reports, site descriptions, and maps for any site I want to visit and carry them with me. I can have high resolution photos and open them in the field with the laptop. I am really looking now for good downloadable field guides to birds, flowers, fungi, non-flowering plants, shrubs, herbs, insects, etc. as pdf files or other similar e-format so I will be able to access them when out there. Suggestions are welcome.

When in the field, I can use the netbook to write quick notes, or long essays with word or notepad. I can dump photos and videos from my cameras onto the netbook's hard drive for storage and viewing on a screen large enough to see them. I can do quick

processing of field data if I desire to get a better idea of how measurements are going in the field. I can have tabulations of big trees and species present. I hope I can make some use of these abilities.

Accessories for the Computer

There is more stuff I have or want to have as accessories for the netbook. The first purchase was a 9-cell battery that will extend my unplugged time an additional 9 hours or so on battery power alone. This cost about \$40.

I want to carry the netbook with me into the field so I want to protect it from water. I occasionally use a canoe to reach sites, so this is important. I bought a packet of dry sacks to wrap the computer. I bought an \$8 soft padded case the netbook as well. With the use of ziplock bags, the dry sack, and the soft case the netbook should be safe from normal weather and even an occasional dunking when sealed up.

I really dislike touchpad's even though this netbook has a decent one, so I bought a small portable mouse to take along (I really should have bought a full sized mouse as the small one feels uncomfortable, but I will get used to it).

Flash drives are a must to install software in a system without a DVD drive. I already have several and used one to install the Windows 7 software and other major software. It is useful to exchange files from one computer to another sans network.

There are GPS units available that are the size of a flash drive that plug into a USB port. I may look into buying one eventually or maybe just buying a serial-to-USB adapter for my existing GPS unit.

There is one other upgrade I will likely perform on the netbook computer. It currently has a single memory slot using a 1 GB ram module. I will upgrade this to 2 GB of memory when I get a reasonable deal (I really haven't looked yet). This is the maximum memory that can be installed on this system. In this model it requires a major disassembly of the laptop to get at the memory module to change it. It might intimidate some people, but I have been

building and repairing computers for over twenty years, so I don't anticipate any major problems. 2 GB laptop chips cost around \$25 dollars or so. To add the memory I will need to backtrack the OS to Windows XP Pro from Windows 7 Starter. XP takes less system resources anyway and will support the 2 GB memory chip.

There may be other things I find I want as time goes by. I don't see any real need for an external DVD writer. I have power inverters to use the normal AC charger that came with the unit, so I don't need a DC charger adapter.

I hope to do a brief field test this weekend, if things are alright here at home and the weather is OK.

Ed Frank

[Preserving banana trunk cross sections?](#)

My name is Cat Olin and I am trying to gain info on how to preserve the "trunk" of the banana plant in cross sections. My inspiration is the "Banana Leaf Wall Panel" from Pier One Imports. I'm hoping the link below will show you a picture of it; if not, the item can easily be found on the Pier One website.



I actually would like to duplicate the item I saw at Pier One. I live amid a small forest of banana trees here in San Antonio, TX. They will have to be cut down in the near future and this year I'd like to make the most of the "waste". I found an article on your site about preserving cross sections of actual trees, so

I thought maybe y'all could help. I've not been able to find anything online about the process and I'm this close to just going to Africa and asking the artists themselves! :) The banana plant has a lot of sap, so I'm just not sure how to proceed. Thanks for your time,

Cat Olin

Asian LongHorned Beetles

by harmonyhillbill » Mon Oct 10, 2011 11:16 pm

My name is Bill, and I was the first one to discover the Asian Longhorned Beetle in Ohio. Our Autumn Blaze Maple trees were discovered as infested in early June of 2011. We have a 70 acre Nationally Certified Wildlife Habitat farm, vineyards and winery. The USDA and ODA have already identified and tagged >3000 trees that will have to be destroyed in our little township alone. I have started a tree initiative to help garner government funds to have our trees replaced. If anyone has any experience with this type of grant writing, or even good suggestions, it would be appreciated.



(<http://www.agri.ohio.gov/TopNews/asianbeetle/>)

The only way to control this invasive pest is to cut the trees down, chip the wood and incinerate it. I have witnessed what damage these ALB can do to a tree in 1 year. I have a 10" caliper Autumn Blaze Maple in the front yard that has literally thousands of oviposition sites in the bark. That means that there

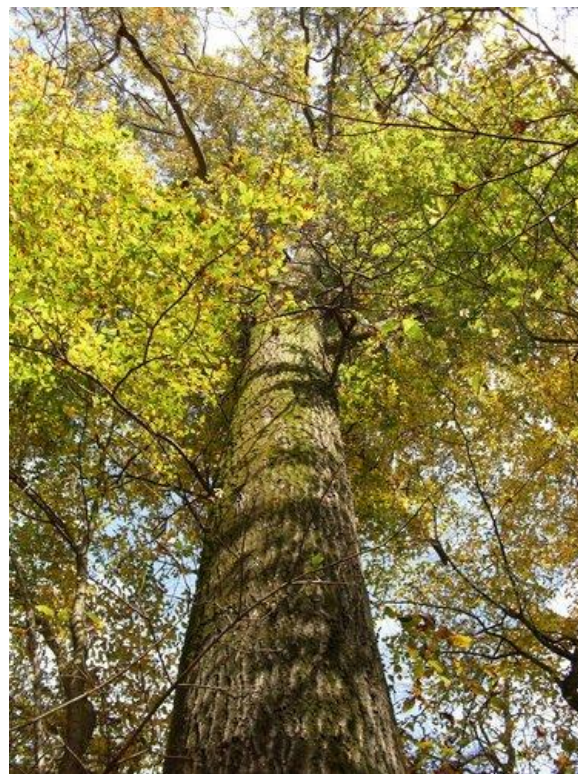
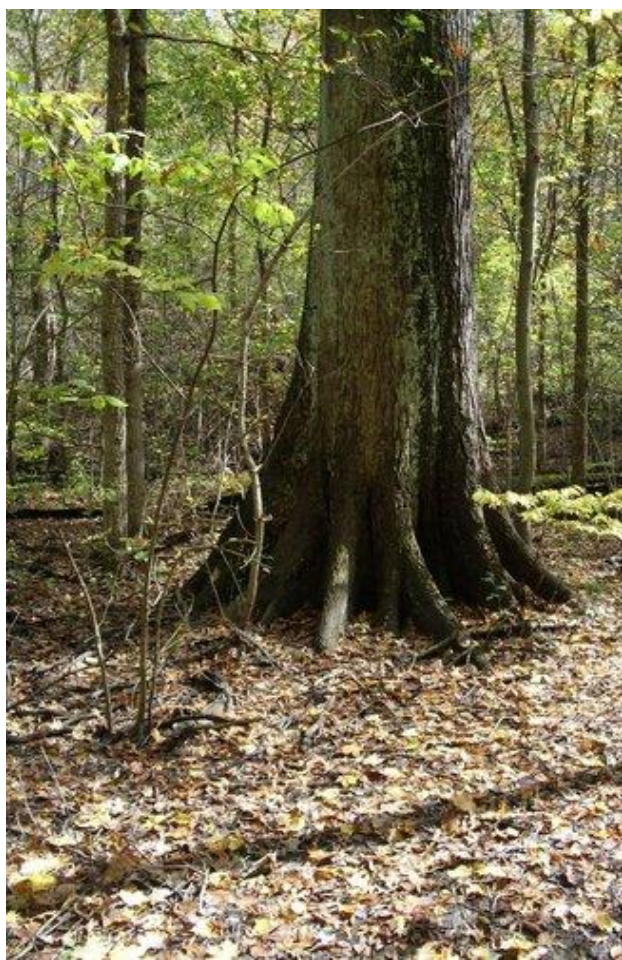
are already those thousands of larvae that have burrowed into the heartwood of the tree and are growing into pupae to hatch from the tree next June. Since the larvae are in the center core of the heartwood and not contained in the cambium or sapwood layers like the Emerald Ash Borer would be, root soaks of Imiclopromid are of minimal efficacy. I have watched this tree transition from a healthy brilliant red maple in 2010 to a skeleton of itself this fall, having lost dozens of branches one at a time. The tree is dying a slow death, as are all trees infested with the ALB. The USDA (APHIS) is cutting down infested trees that are already doomed to a slow death, only to save those neighboring trees that are healthy. Whether "massive scale cutting does anything to prevent the spread", remember, The ALB has been eradicated in Chicago, and APHIS is conducting final surveys to deem New Jersey and New York City eradicated. This is following the cut and incinerate method of eliminating the infested trees.

Harmony Hill Bill

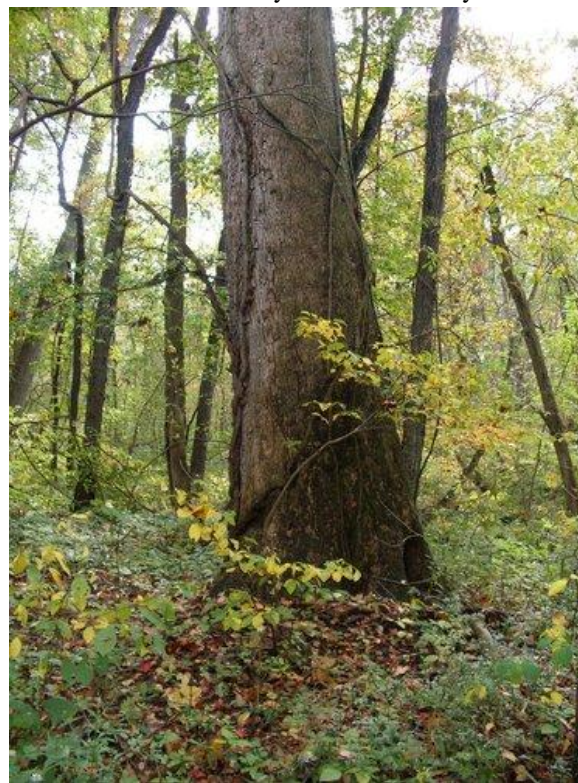
Bacon Woods & Vermilion River, OH

by Steve Galehouse » Thu Oct 13, 2011 6:10 pm

Today I revisited an area I first reported on in April 2010. This area is a floodplain forest along the Vermilion River in Lorain County, composed mainly of sycamores, walnuts, and cottonwoods. When I first reported on the site I found a big pin oak which is now even bigger---123.4' tall with a 14' 6" girth, an increase of 1' in height and 4" in girth.

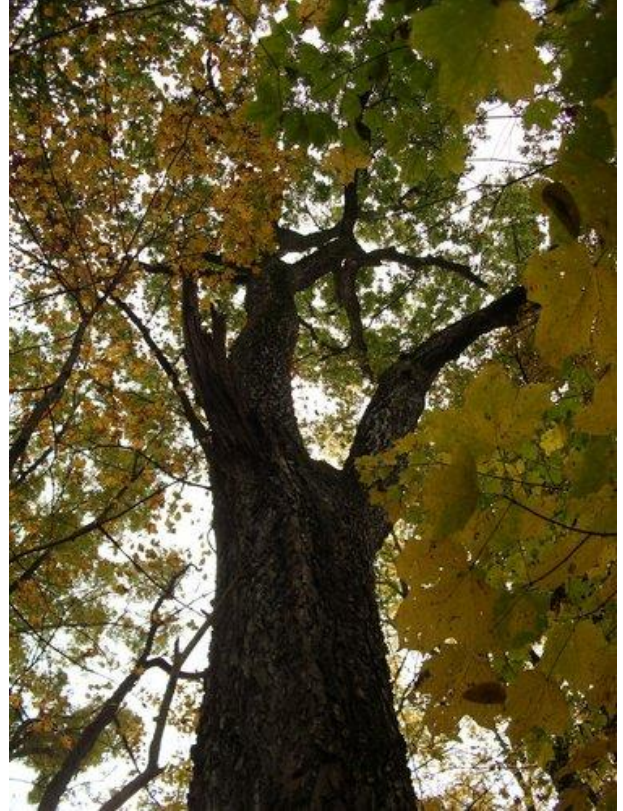


Another nice tree was a sycamore at 123' by 13':

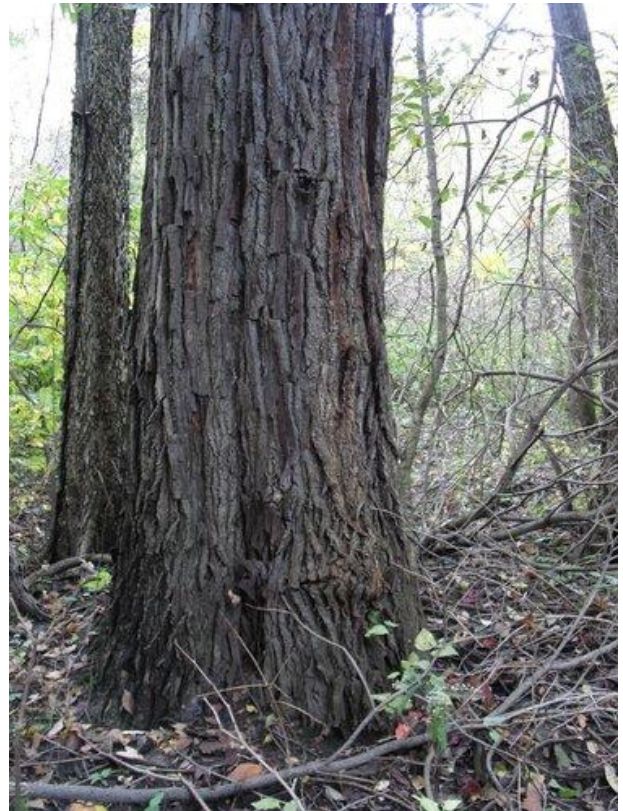




Other finds include a hackberry at 95' by 8' 10" ;



a sassafras at 86' by 9' 4";





and a walnut at 113.2' by 10' 6":



Other notable trees included a boxelder at 13' 4" girth and a honeylocust at 9' 1" girth.

More details of the site are here:

<http://alpha.treesdb.org/Browse/Sites/885/Details>

Steve

NYBG Hosts "The Future of Forests"

by Jenny » Thu Oct 13, 2011 5:34 pm

The New York Botanical Garden is hosting a symposium on The Future of Forests on Saturday November 5, 2011. (There is a Wildlife Rehabilitators Conference that week-end upstate New York, which I may not be able to attend, ironically because I won't be able to find anyone to take care of

the 5 pigeons and 6 sparrows I am rehabbing at home!! So, I may be attending and will be sure to report what these particular folks think about the future of forests.)

Anyway, Their blurb reads:

"The 50-acre Thain Family Forest is the largest remaining tract of old-growth forest in New York City. To celebrate its dedication and ongoing program of forest restoration, the Botanical Garden will host a symposium featuring presentations from internationally recognized scientists and policymakers who will address the essential role that forests play in preserving biodiversity, mitigating human-caused environmental change, promoting research, and connecting people with nature."

Link if interested.

http://nybg.convio.net/site/MessageView...v_id=10322

Jenny Dudley

Kyle Lake, PA Fall Foliage

by edfrank » Sat Oct 15, 2011 2:59 pm

Here are some photos from Kyle Lake, and artificial lake near Reynoldsville, PA, October 10.2011. I have not adjusted the color saturation in the images to make them more colorful, but did increase the contrast very slightly.







[Kinzua Bridge State Park, PA](#)

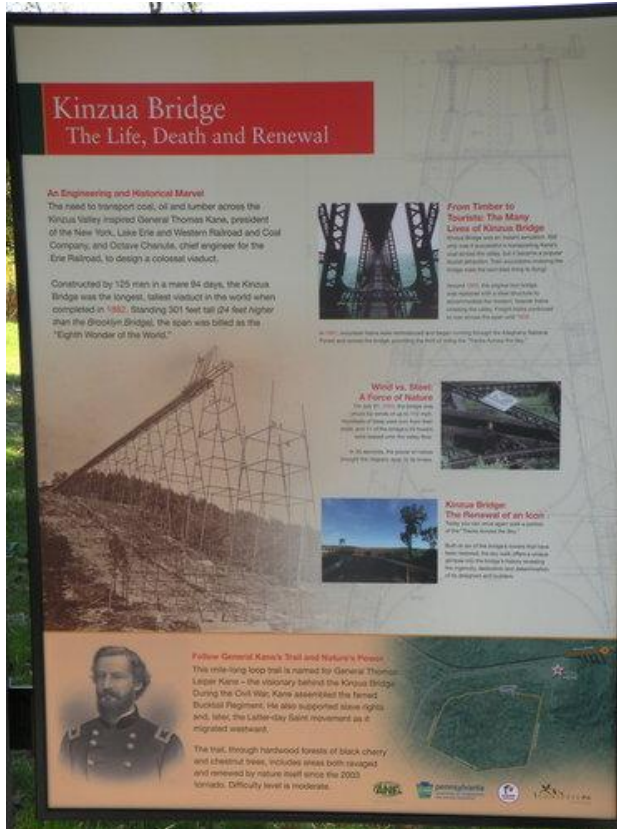
by edfrank » Sat Oct 15, 2011 1:59 pm

On October 6, 2011 I decided to visit Kinzua Bridge State Park in north central Pennsylvania. It was autumn and I hoped that the fall colors would be peak at the park. This is one of the premier places to go to view the autumn colors. Many of the trees had changed to bright orange, yellow, and orange along the road on the trip northward. Unfortunately at the park itself it was still too early to see the peak colors - most of the trees there had just begun to change.

http://www.youtube.com/watch?v=WlAPZRWSqOA&feature=player_embedded

This park is the site of a railroad viaduct across Kinzua Creek. The bridge was constructed in 1882

by 125 men in just 94 days. At the time it was the longest and tallest viaduct in the world standing 301 feet tall. The original wooden structure was replaced by a steel bridge in 1900. Freight trains continued to use the bridge until 1959. In 1987 train tours started once again to cross the bridge.



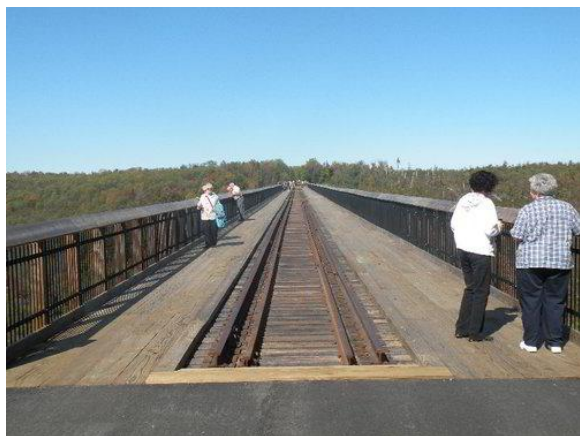
I had hiked across the bridge many times in the 1980's, and had tried to get permission for our caving group to use it for rappel practice. In 2003 a F1 tornado struck the bridge and knocked much of it down. I shot some video at the site and took photos a few days after the fall of the bridge. I will track those down and post here. In September 2011, they had repaired the south end of the bridge and constructed a viewing platform on the remains of the original structure. I wanted to check out the new viewing platform. Here are some shots from the trip:



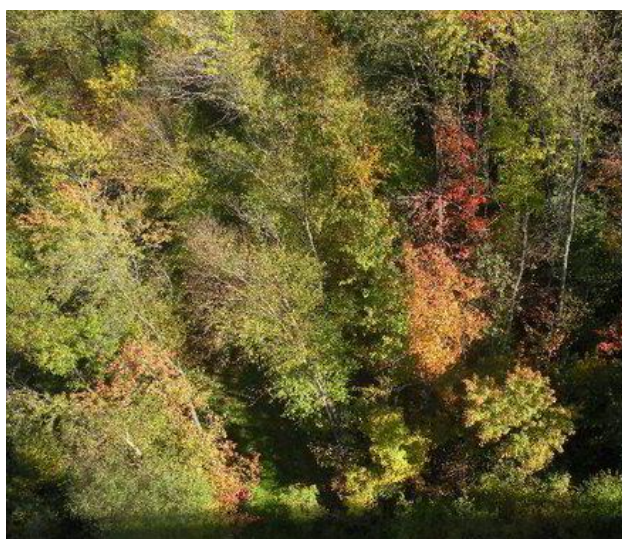
The viewing platform on the south end of the viaduct.



Look along the bridge from Platform



Looking down on the tree tops:



Remains of the fallen viaduct:





Location of Kinzua Bridge State Park in Pennsylvania

View of some trees along the south rim recovering from the tornado damage:



Paper/Pulp Mill in nearby Johnsonburg:



Edward Frank

Hillside near Falls Creek, PA Fall Foliage

by edfrank » Sat Oct 15, 2011 3:09 pm

NTS, Here are some colorful fall foliage shots on the hillside near Kyle Lake, October 10, 2011. I have never seen colors so spectacular as they were this fall here. These images have not had their color saturation increased, and the contrast only adjusted slightly. It was a gray cloudy day - that helps explain the intensity of the color.







Edward Frank

[Collaborative tree mapping](#)

by Jean Weber » Sun Oct 16, 2011 8:38 am

I would like to present <http://pericopsis.org/> a free website for collaborative tree identification and tree mapping. It is possible to define an area (for example your garden or your street) using a polygon and to map the trees you have identified. Trees are identified by their scientific name and online queries permit to find on a map where species or varieties are growing. It is based on the principle of a Wiki: each contributor can edit the trees and the changes are recorded. A video tutorial is available on the Website.

The objective of the website is to give a visibility of the knowledge of tree taxonomy in urban and peri-urban areas in order to bring biodiversity in the focus of the public and decision makers. If we reach sufficient participants it could become a unique tool for a better management of biodiversity conservation where people are living. This could also demonstrate the need of ex-situ conservation of endangered lowland species when natural reserves are located in hill or mountain areas.

Northern California redwoods visit

by Andrew Joslin » Thu Oct 13, 2011 7:20 pm

I had the opportunity to visit redwood groves in Northern California recently with my wife Meg celebrating our 25th wedding anniversary. We were not disappointed! First day there we were guided by the able and enthusiastic old-growth fan Mario Vaden. Mario showed us some of his favorite spots in Prairie Creek Redwoods State Park, such a variety of superb trees! I think you could go in there blind-folded and encounter one great tree after another but with Mario leading the way the trees were (as ENTS are fond of saying) off the charts!

The next day Meg and I explored Jedediah Smith Redwoods Park on our own, Mario gave us a nudge in the right direction. Again, I think just about any trail in Jedediah is going to provide a great experience of PNW old-growth. Jedediah knocked our socks off, the super quiet green world rainforest left our jaws semi-permanently slack. The terrain reminded me of Mohawk, the kind of woods I like with steep slopes holding bigger trees nearer the bottom where the creeks run.

My Nikon 440 and clinometer were pretty much useless, for most big trees to sight the top meant losing the base, I think the TruePulse rules in this habitat.

Some redwood forest eye-candy for you...

Passage to another world (no exaggeration)



Meg embraced by a big one



Counting rings, I gave up, outer third of the cross-section has extremely tight rings, probably 500 - 800 year-old "sprout"



Epic cathedral structure



View of the same cathedral



Meg at the base of a twin giant



Many thanks to Mario for meeting us and taking us
into the woods,
-Andrew Joslin

Re: Northern California redwoods visit

by AndrewJoslin » Thu Oct 13, 2011 8:03 pm

Joe Zorzin wrote: I've been to Jediah Smith in '92---- did the Boy Scout Trail. I stepped off the trail and after about 100' I felt lost- with the tall ferns and giant trees- any sense of the trail was gone. The duff layer seemed incredibly deep. The biodiversity just in the soil must be immense. I kept thinking of the movie, "Honey, I Shrunk the Kids" in the scene where they were walking through the forest. Knowing that most of the redwoods and sequoias have been cut really angers me. Joe

At one point in Jedediah deep in the woods my wife became temporarily overwhelmed when we were barely able to see over sword ferns with giant trunks around us, the woods were king and we were just little short-lived critters barely relevant in the scheme of things.

Putting aside obvious corporate raider greed (think Charles Hurwitz and Maxaam) there is the problem of the inability of the human species to cope with scale when looking at ecosystems. Walking in the remaining redwood forest it feels immense and without limit. It's similar to a person in Florida thinking, "global warming can't be true" when there's an unusual cold snap. On the ground I can see how a logger would think "Why not take a few more? There's plenty!" Flying over the Northern California coastal ranges it becomes clear how much has been cut and how little that's big remains. To think of exploring seemingly "endless" tracts of redwood forest 300 years ago is beyond the ability of human imagination.

-AJ

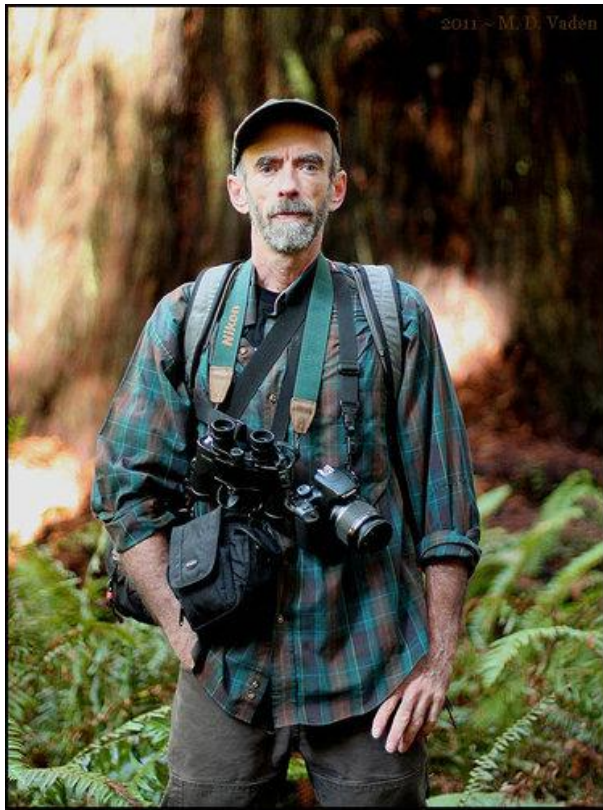
Re: Northern California redwoods visit

by mdvaden » Fri Oct 14, 2011 9:30 pm

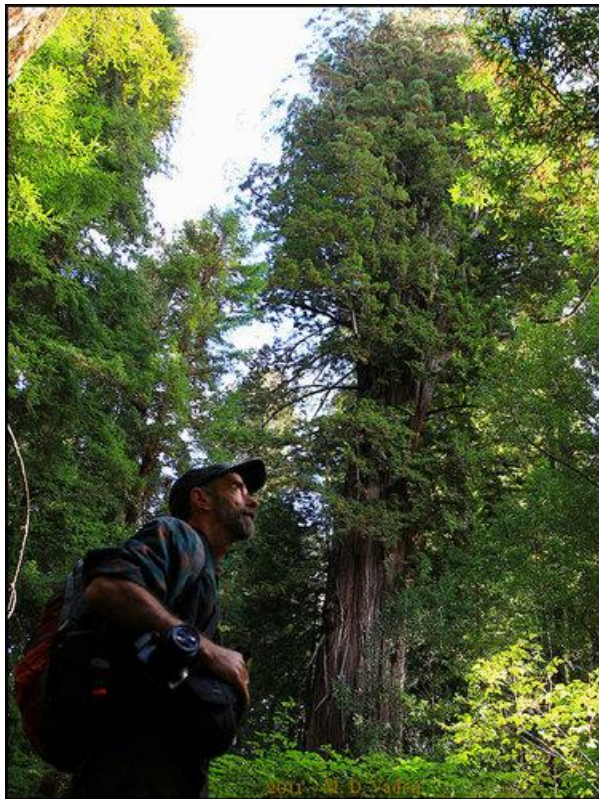
Already looking forward to the next adventure together Andrew !! It was a pleasure dodging the ferns with you and enjoying the giants.

Hey ... whose this dude - lol





Again, in Prairie Creek redwoods ...



Next time Andrew comes out here, maybe we can take a midnight stroll. The shot below is a goosepen. I arrived in Prairie Creek park one "night" about 3 in the morning, and started tinkering with the camera and groves.



M. D. Vaden of Oregon

Live Oaks of Beauvoir, MS

by Larry Tucei » Sun Oct 16, 2011 8:32 pm

NTS, Today I visited Beauvoir in southern Ms., the last home of Jefferson Davis President of the Confederacy. The trees on the property are not large but are more historical.



Beauvoir House

Beauvoir means Beautiful View in French. The annual Fall Muster was taking place so I decided to take advantage of the event and look for large Live Oaks at the same time.

Directors Mr. Forte and Mr. Flowers

I enjoyed my visit today at Beauvoir and as I promised here are the results of your 3 biggest Live Oaks. The 3 Oaks I measured are in the 150-200 year old range. Most of the Live Oaks on the property would likely be in the 75-150 year old range. One of the Live Oaks that had been cut down that is piled north and west of the House had some really fast growth rates. The smallest rings were 1/8" and the largest to 7/8" radial growth. The cut tree I measured was 4' 9" in Dia., and I counted 90 -100 rings.



Live Oak Ring Count



Live Oak Ring Count

Jefferson Davis Oak CBH- 14' Height-45' Crown
Spread-84' x 90'



Jefferson Davis Oak

Verina Davis Oak CBH-15' Height-36' Crown
Spread-81' x 99'



Verina Davis Oak



Jefferson Davis Oak



Verina Davis Oak

Sarah Dorsey Oak CBH-16' Height-66' Crown
Spread-99' x 102'



Sarah Dorsey Oak

The Jefferson Davis home and outbuildings are outstanding. Everyone has done a great job of restoration after Hurricane Katrina. I have always favored the property for its beauty and History. The Fall Muster was a really interesting site to see and I enjoyed it much. Again thanks for letting me measure and photograph the Live Oaks at beautiful Beauvoir. <http://www.beauvoir.org/>

Larry Tucei

New Member - Pinecrest

by pinecrest » Sun Oct 16, 2011 12:42 pm

Hello! I am an artist and part time resident of the central Sierra Nevada. I've spent years searching and photographing the pine forests of the region in order to better understand their history, and to eventually bring that history back to life in paint.

I have put a particular effort to into sugar pine as a species, due in part to the strange contradictory way in which this specie's history was written down. Ever since I read the old books my grandfather had on

trees, I have wondered why each one described sugar pine so differently.

For years now I have been photography thousands of sugars and finding more questions than answers. Whereas I once thought that exploring the forest would tell me which of those old books was right, I now find myself questioning everything I've seen published on the subject.

Anyway, I'll save the rest for another post.

Pinecrest

Dolly Sods Wilderness, WV

by jamesrobertsmith » Sun Oct 16, 2011 8:52 pm

First off, I'm going to post a photo of something I couldn't explain. I don't know what it is or how it formed. As I hiked and bushwhacked across the Dolly Sods Wilderness on Saturday, October 15, 2011, I would occasionally find these mounds of earth. All of them were roughly the same size...about two feet high and four or five feet in circumference. They were all sitting out in open areas where there were no large trees. Mainly just in areas where there were grasses, shrubs, huckleberry bushes and the like. What the heck are they?



The consensus seems to be that they are ant hills

Re: Dolly Sods Wilderness

by jamesrobertsmith » Sun Oct 16, 2011 11:27 pm

While you guys try to figure out what those are, here are some more photos taken in Dolly Sods. I was

searching for aspens in the wilderness, which I have been told are there, but I didn't spot any.



The Huckleberries and blueberries turn red in Autumn.



The great Appalachian bog known as "Dolly Sods". This thing is enormous. I was able to get out into it by rockhopping out to a boulder where I got down on

my belly to take photos. A truly amazing place!



The wilderness is perched on the top of the Allegheny Front and just about all of it lies at around

4,000 feet in elevation. The forest has been recovering for about 100 years and the trees are mostly very stunted.



As a contrast to the short, wind-stunted spruce trees of Dolly Sods, here is one of the old growth spruces on Gaudineer Knob some miles to the south and west.

James Robert Smith

[ATG Climbs & Confirms Tallest Ponderosa. New Tall Sugar Pine](#)

by M.W.Taylor » Sat Oct 15, 2011 8:21 pm

I recently met up with Ascending The Giants cimbbers out of Portland, Mario Vaden and 2 seperate media groups to document the tallest known ponderosa.

The media was invited because this tree is directly threated by proposed future clear-cutting of National Forests. This legislation is soon to be voted on. We want to bring public awareness to Oregon's magnificent trees in hopes that the last ones would not be cut down. All of the tallest ponderosa and sugar pines and the 7 tallest known douglas fir in the entire world grow in Southern Oregon are potentially threatened.

In order to access the canopy of Phalanx, Will, co-founder of ATG, needed to climb an adjacent tree, another large ponderosa with lower branches and then traverse over at 200' off the ground. See the attached photographic sequence which is a bit out of order.

Will is one of the fastest and most graceful tree climbers I have ever watched climb a tall tree.

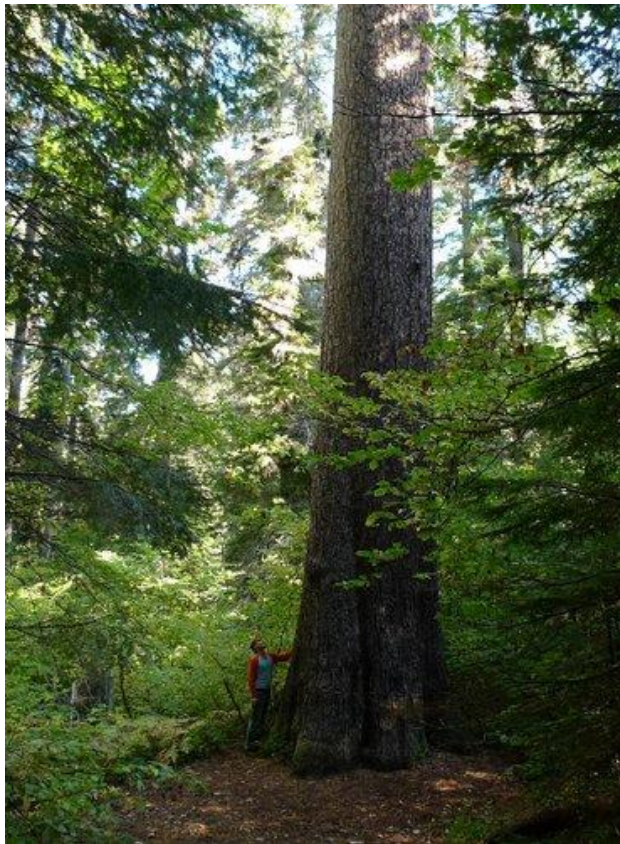
Using a slightly more conservative ground level than the one Chris Atkins and I used, ATG directly measured Phalanx at 268.04'. Will reports the top is alive and healthy. The tree could easily reach 270'+ in 4-5 years. However there is a substantial lean at the lower to mid-bole section, which is quite severe. This tree could easily snap in two at the bole during a big storm.

On the same day ATG climbed Phalanx, Mario and I explored the area a little more and found a well hidden towering sugar pine with a twisted trunk. This "Cull" tree was left behind as scraps. The dbh was about 8' and I estimated the height at 253.5' using a Trupulse200 laser. The measurement is +/- 1 yard. ATG plans to climb and directly measure the tree today and I will have a more accurate figure shortly. Given that 9' and 10' dbh slow tapering shaft-like sugar pines were "high-graded" out of this valley a century ago, it's believable a sugar pine here could potentially reach 300'. This secret basin is the nexus

for tall ponderosa and sugar of the world, besting even California's Dorrington area. Unfortunately most of the finest sugar pine of Oregon were picked off a long time ago.



The next day, I visited the tallest known sugar pine in Umpqua National Forest. It's a quite a beauty. Also found a nice 247' specimen about a mile upstream from the tallest sugar pine. This 247 footer is the 3rd tallest known still standing. Cbh was 20'.



Me under world's tallest known sugar pine in Umpqua National Forest



world's tallest sugar in Umpqua National Forest



Me helping ATG with the ground level survey



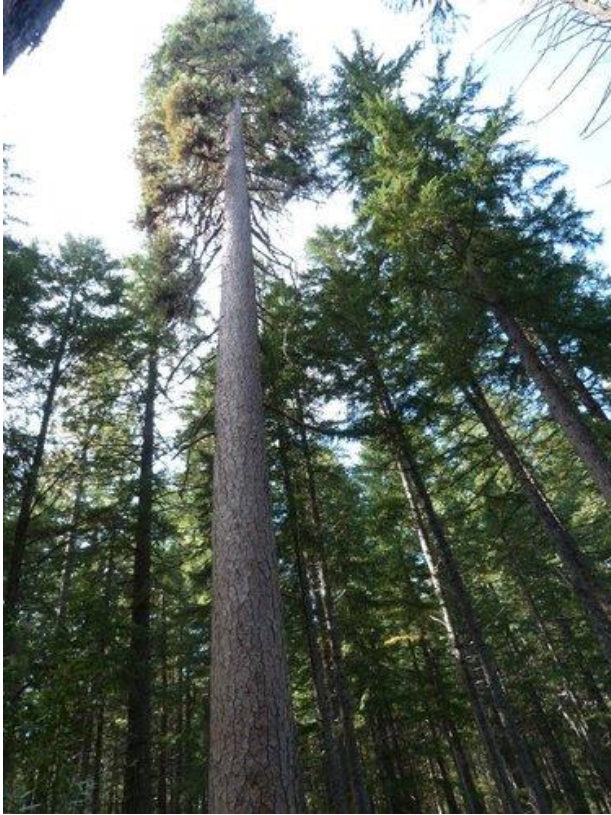
Will's daring traverse



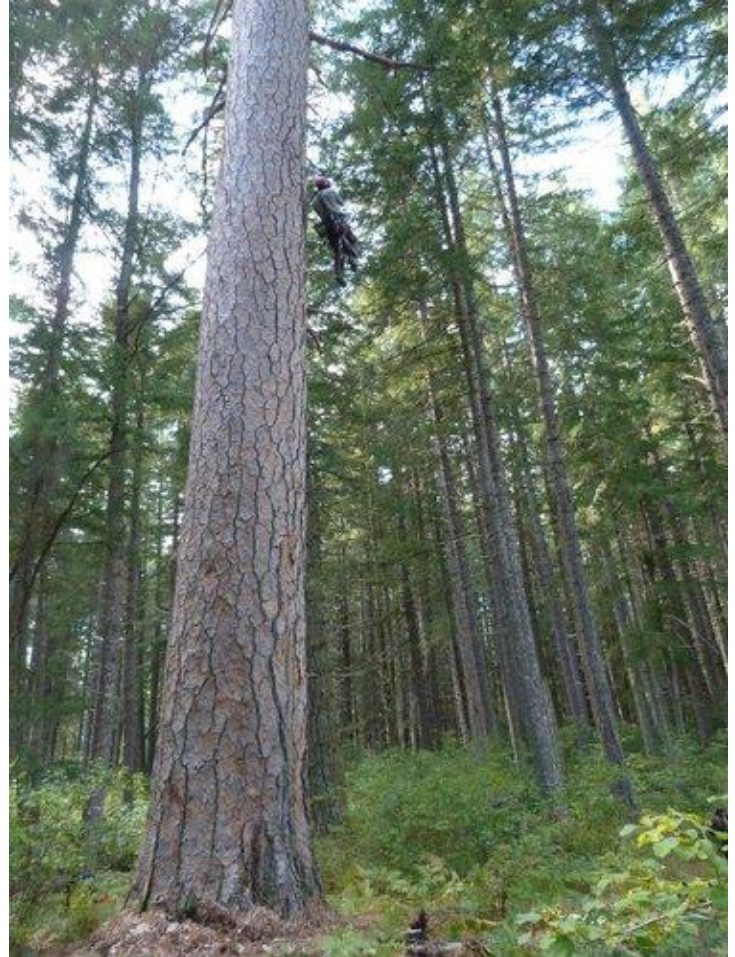
Will finally makes it over to Phalanx



Will making traverse to Phalanx at 200'+ above ground!

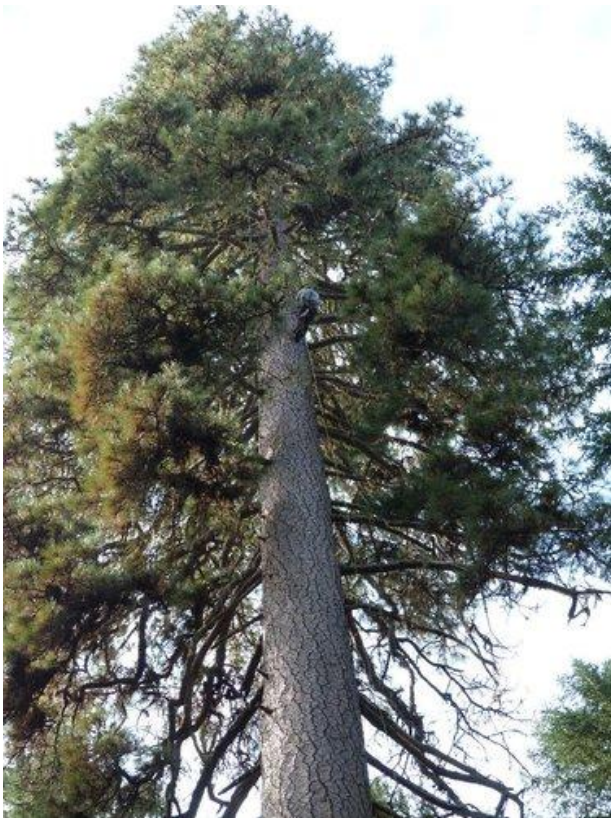


Will at 180' on 1st. access tree



will going up adjacent tree to access tallest ponderosa canopy

Michael Taylor



Will going up 1st. access tree

About the team: An arborist by profession, Will Koomjian, a founding member of Ascending the Giants, and fellow tree-climbing arborists Damien Carre of Portland, OR and Augie Schilling of Ashland, OR along with Michael Taylor of Trinity County, CA and Mario Vaden of Beaverton, OR participated in the measurements. The ponderosa pine, dubbed the Phalanx, located in a heavily forested basin in the Wild Rivers Ranger District of the RogueRiver-Siskiyou National Forest was discovered by big-tree hunters Michael and Mario Vaden, Jan. 3, 2011.

Re: ATG Climbs & Confirms Tallest Ponderosa. New Tall Sugar

by mdvaden » Sat Oct 15, 2011 8:53 pm

Was waiting for Michael to start a topic on this one. Here's a few extra photos to share from the day.

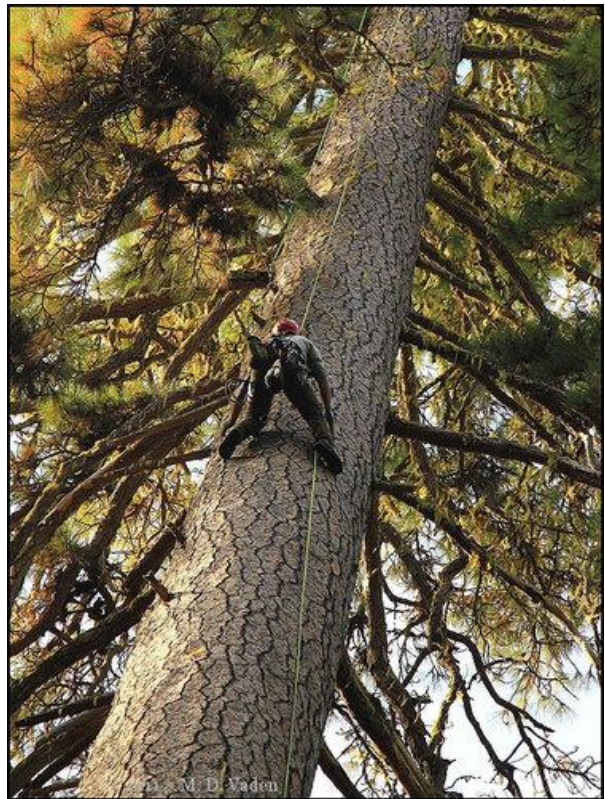
Look real close at the wide angle shot. See the tiny speck that looks like teeny bird? That's the climber traversing top to top.



THAT LITTLE SPECK IS NOT A BIRD,
BUT THE CLIMBER TRAVERSING TOP
TO TOP

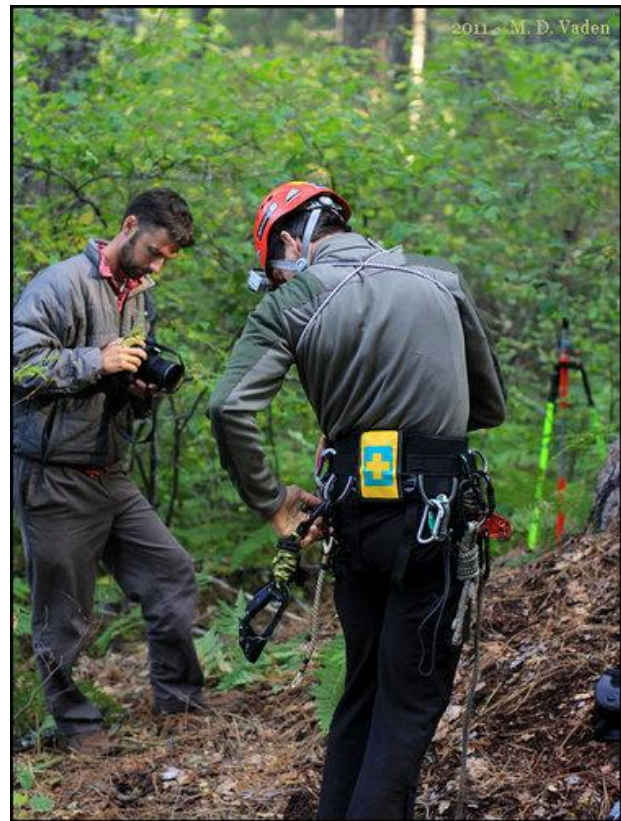
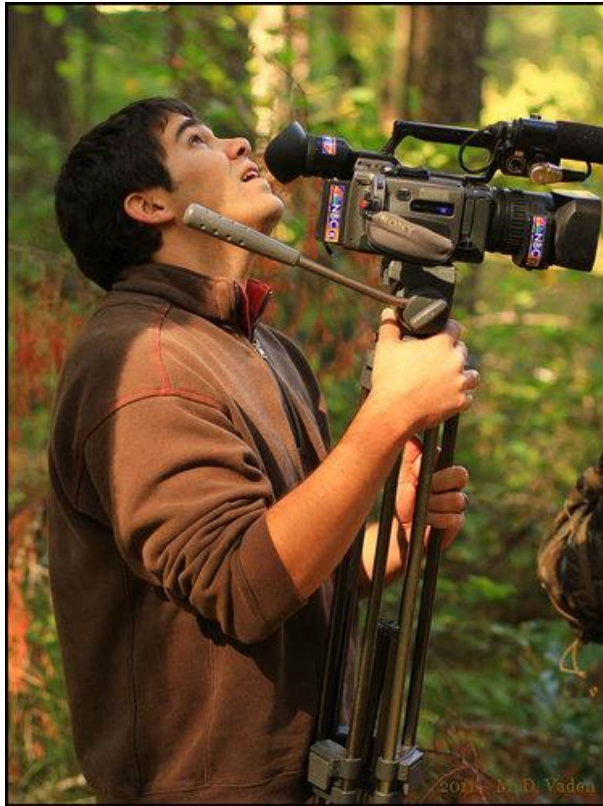


At the base of Phalanx



Will Ascending Phalanx

A few more from the day ...



M. D. Vaden of Oregon

Re: ATG Climbs & Confirms Tallest Ponderosa. New Tall Sugar

by M.W.Taylor » Mon Oct 17, 2011 2:29 pm

These two articles came out in the Medford Tribune today about ATG's visit to the Basin.

<http://www.mailtribune.com/apps/pbcs.dll/article?AID=/110170321> and

<http://www.mailtribune.com/apps/pbcs.dll/article?AID=/110170322>

Michael Taylor

WNTS VP
California AFA Big Tree Coordinator
www.landmarktrees.net

New TV Broadcast Confirms Tallest Pine Actually 268.29'

by M.W.Taylor » Tue Oct 18, 2011 12:38 am

Check out Joe Camarlinghi nice little broadcast tonight. great piece !

Also, I can see there was a communication error. I hear Will say on the radio 268.75'....Somehow I heard 268.5' to the low side of ground level. This means the tree is taller than 268.04'.

Since the high side was .92 feet higher than the low side, the average between the high and the low sides based on the correct tape-length of 268.75 - (.46') or 268.29' (I used 268.5' to to get the 268.04') But I should have used 268.75

So this means the actual height of Phalanx is 268.29'... I got. 268.3'. I was within millimeters of the correct height. This is the official height and it's nails.

Thanks to Joe's video documentation and my poor hearing we now know Phalanx is 268.29'

Check it out !

http://www.localnewscomesfirst.com/index.php?option=com_content&view=article&id=10294



Michael Taylor

Re: Tallest pine actu268.29 ft confirmed by AF

by mdvaden » Tue Oct 18, 2011 12:42 am

Thanks for the email and update here Michael. I quoted you on the Treebuzz arborist forum too in a related topic there.

After being out with you measuring, that kind of accuracy is becoming less of a surprise and more to be expected.

Also, here's a few more pics. I like the way Will's belt is all geared-up for the climb.





M. D. Vaden of Oregon

<http://earthobservatory.nasa.gov/NaturalHazards/view.php?id=76104>

Rand Brown

[Fall Colors, October 11-14 2011, West Virginia](#)

by jamesrobertsmith » Mon Oct 17, 2011 10:12 pm

My wife and I realized when we hit Kumbrabow State Forest that we were seeing the best Fall colors in decades for either of us. I hadn't seen colors so brilliant since I was a kid just a year after high school graduation in Cohutta Wilderness Area in Georgia in the Fall of 1976. These were, perhaps, even better than that show.

Following are some spectacular displays of Autumn color between Kumbrabow State Forest and Seneca Rocks Recreation Area and some points in between.

[Re: Pagami Creek Fire, Minnesota](#)

by Rand » Mon Oct 17, 2011 5:15 pm



Nearly two months after being ignited by lightning, the Pagami Creek Fire in northern Minnesota was nearly contained when Landsat-5 acquired this image on October 10, 2011. Since August 18, the fire has been burning in the Boundary Waters Canoe Area Wilderness in Superior National Forest. As of October 11, the fire had burned 92,682 acres and was 82 percent contained. Apart from a faint hint of smoke, there is little sign of current fire activity in the image. The burned forest, however, is charcoal-colored, in contrast to the green forest around it.



At the old CCC camp in Kumbrabow State Forest.



The view from Buck's Knob in Kumbrabow.



Looking up beyond Seneca Rocks from our campsite at Seneca Shadows Campground.



The last of the brilliant colors in the process of being knocked out of the trees by a heavy rain.



Just outside Kumbrabow State Forest.



From the Raven Rocks overlook while hiking to the summit of Buck's Knob. The forest ranger at Kumbrow told us that they'd had a really good frost that seemed to bring the colors out.

For what it's worth, I asked him if hwa had reached the park yet, because all of the hemlocks seemed perfectly healthy. But he said it was there, in spades, but that the local forest service was treating the forest aggressively. And I can say that they weren't just targeting the hemlocks around the roads and

campgrounds, but all through the forest. I hiked and bushwhacked through the forest and saw only a couple of patches of sickly hemlocks. All the rest were full and green.



Many great-looking healthy hemlocks as I climbed to the summit of Buck's Knob, around 4,000 feet. The Forest Service folk had obviously hiked and bushwhacked all over the park treating the hemlocks.



Looking up along the Raven Rocks Trail - James Robert Smith

Osage Orange, WV

by jamesrobertsmith » Mon Oct 17, 2011 10:22 pm

I picked up an osage orange fruit while in the Smokehole Canyon in West Virginia. This reminded me that I long ago promised to measure the downed Osage orange in a local park for someone here at ENTS. Perhaps it was Ed Frank? I don't recall. But now that we have cooler weather and the chiggers that got under my skin the last time I was at Reedy Creek Park have gone, I will head out that way as soon as I can and measure that tree to see how it would have stacked up when alive. I can even do a horizontal "tape drop" since the tree is now prone.



My Osage orange fruit. I brought it home. The thing smells great.



The tree was growing along the banks of the river at Big Bend Recreation Area in Smokehole Canyon on, I assume, the branch of the Potomac River. One way that the seeds can find distribution now that the mammoths and sloths that used to crap them out are long-since extinct.

James Robert Smith

The 7th Annual Forest Summit Presenters

Forest Summit Presenters 2011

Keynote Speaker



*Dr. Fred Paillett - Department of Geosciences
University of Arkansas, Fayetteville, AR (file photo)*

The American Chestnut: Ecology, Devastation and Restoration of a Forest Icon

Just about everyone knows of the tragic loss of an iconic eastern forest tree that once was such a valuable timber source and prolific nut producer for wildlife and humans alike. The chestnut was not just another big forest tree. Its ecology and life history were and still are distinctly different from those of the oaks and beech to which it is distantly related. We start by looking at the Holocene history of chestnut, showing that its peculiar response to climate produced a late Holocene re-organization of New England's forests. Blight arrived in America shortly after 1900 and its spread through the range of chestnut and chinquapin is documented by the release pattern of adjacent trees wherever it grew. The unique qualities of chestnut are further demonstrated by its ability to persist in the forest in the presence of two separate introduced diseases, so that the tree can often dominate the understory without benefit of sexual reproduction. We investigate this phenomenon in detail, and then visit unique stands where chestnut can be seen today as a forest dominant - the West Salem, WI stand where chestnut escaped into native oak hickory forests in a location far beyond the range of blight; and in the unblighted forests of closely related European chestnut in southern Russia. We end with an update on the status of the American Chestnut Foundation program to restore chestnut to

its rightful place in our ecosystem.



*Dr. Henry Art - Robert F. Rosenberg Professor of
Biology & Environmental Studies at Williams
College (file photo)*

What We Know (and don't know) about an Enigmatic Woodlot - The Continuing Role of the Research Hopkins Forest"

The Robert F. Rosenberg Professor of Biology & Environmental Studies at Williams College, Henry Art has taught biology and environmental studies at Williams College since 1970, when he rejuvenated the Hopkins Memorial Forest as a field research site. His research centers on the impacts of past land uses on the successional patterns, growth rates, and ecosystem functions of a landscape typical of western New England. He is a past chair of the Biology Department and former director of the Center for Environmental Studies at Williams. He also serves on the Williamstown Conservation Commission, the Board of Trustees of the Conway School of Landscape Design, and is the Vice President of the Williamstown Rural Lands Foundation.



Will Blozan - President of the Eastern Native Tree Society (ENTS) and Appalachian Arborists

Liriodendron Tulipifera, King of American Hardwoods

Co-founder and president of the Eastern Native Tree Society (ENTS), Will has been a practicing arborist for over 24 years. He currently owns his own business as an arborist in Black Mountain, North Carolina. His passion for climbing and caring for trees brought him to Great Smoky Mountains National Park in 1993 where he worked on identifying, mapping, and inventorying old-growth forests. It was during this project that he discovered numerous champion trees and developed a fascination with old-growth forests. Will's climbs have helped pioneer arboreal efforts towards the development of precise survey techniques, including the documentation of some of the largest specimens of eastern trees ever recorded. Will Blozan is a living legend. Will has climbed and documented the tallest trees in North Carolina, South Carolina, Georgia, Pennsylvania, Massachusetts, New Hampshire, and elsewhere for both science and sport. He has been featured in several television documentaries. He was instrumental in adopting and refining techniques of western US canopy researchers, which has allowed

the ENTS to introduce three-dimensional crown mapping and volume modeling to eastern trees research. In addition to numerous eastern big/tall tree climbs Will has been assisting world-renowned canopy researchers on projects in the giant sequoias of California.



Dr. Don Bragg – Research Forester, US Forest Service

USDA Forest Service, Southern Research Station The Role of the USDA Forest Service in Promoting Natural Communities

The southeastern United States is the largest timber producing region in the world, and is poised to retain this position through the ever-increasing use of intensively managed plantations of genetically improved pines, primarily loblolly (*Pinus taeda*) and slash (*Pinus elliottii*). While extremely productive from a biomass standpoint, these plantations represent considerably less diverse plant communities with reduced genetic, age, and structural complexity. Pine-dominated stands of natural (seed) origin are not as commercially lucrative but offer a wider range of structural, functional, and compositional attributes that, when coupled with the timber productivity of these forests, may provide a better value in total ecosystem services. The US Forest Service and the University of Arkansas-Monticello are currently evaluating a number of ecosystem functions within these natural origin pine-dominated forests, including

carbon storage, fiber production, soil properties, and wildlife habitat, and comparing them to intensively managed pine plantations in the Upper West Gulf Coastal Plain. Preliminary results suggest that some of the productivity elements of naturally regenerated stands are more comparable to pine plantations when not viewed strictly as commercial products (e.g., lumber) but rather as an ecosystem service (e.g., carbon sequestered).



*Peter Church - Director of Forest Stewardship, MA
Department of Conservation and Recreation*

DCR Response and Role, Post Hurricane Irene and Tornados

DCR's response to the tornado and hurricane damage of the past summer.



*Dr. Lee Frelich - University of Minnesota, Director
of the Center for Hardwood Ecology*

Multiple factors and thresholds for forest change in a warming climate

A warming climate will lead to increasing frequency of storms, drought, fires, and insect outbreaks, as well as alter the influence of invasive species and large herbivores, in the temperate-boreal forest ecotone. These drivers of change will create a number of scenarios for sudden change in forest composition under a gradually warming climate, in some cases by directly exceeding a threshold for a jump to an alternate state and in other cases by opposing change early on, causing stress to build up until the forest system makes a sudden jump.

Lee Frelich is Director of the University of Minnesota Center for Forest Ecology. He received a Ph.D. in Forest Ecology from the University of Wisconsin-Madison in 1986. Frelich teaches courses in Forest Fire Ecology and Landscape Ecology on St. Paul Campus. He has advised 23 graduate students, and is a senior member of the Conservation Biology, Natural Resource Science and Management, Ecology, and Invasive Species Graduate Programs. Frelich has published many papers on forest ecology with 81 coauthors from 10 countries and has been listed among the top 1% of all scientists in the world in the Science Citation Index, Ecology and

Environment Category. He has appeared in the news media 300 times including The New York Times, Newsweek, National Geographic, and many TV and radio stations. Current research interests include fire and wind in boreal forests, long-term dynamics of old-growth hemlock and maple forests, invasive earthworms in forests, moose-vegetation relationships, patterns of tree height and global warming.



Sharyl Heller – Massachusetts Friends Network

Are We Making Progress? The Role of the Friends Network

(No Description)



Robert Leverett – Cofounder and President of Friends of Mohawk Trail State Forests and Executive Director and Co-founder the Eastern Native Tree Society

"Native Tree Society - A Quick Overview" and "The Role of ENTS in the Conference Series" & "Travels to Far Away Places with an Eye on the Trees"

Described as the "old growth forest evangelist of the east," Leverett's widespread forest meanderings have led to a large database of tree measurements and an encyclopedic knowledge of the significant remaining forests of the eastern U.S. This evening Bob takes us on a visually stunning tour of the "Great Forests of Massachusetts."

Bob and fellow ENTS co-founder Will Blozan have pioneered tree measuring techniques that have allowed ground-based measurements to be accurate to within a foot of true height. Bob is the President of the Friends of the Mohawk Trail State Forest, the primary architect of the Eastern Old Growth Conference series, and co-organizer of the HCC/ENTS Forest Summit Series. His extensive wanderings throughout the Eastern US have earned him the title "Eastern Old Growth Forest sleuth". Bob's recently published book (coauthored with Bruce Kershner) entitled "Sierra Club Guide to Ancient Forests of the Northeast" will be available at the Forest Summit.